

Risultati

1)

a) Trapezio isoscele ;

b) Perimetro $\approx 27,4$ cm ;

c) M (9; 3) ;

f) Raggio = 3 cm; Area del cerchio = 9π cm² ;

i) Area rettangolo = 24 cm² ;

j) Retta r: $x = 9$;

k) Retta s : $y = 5$;

2)

espressione = -8 ;

a) determinata $x = -3$;

b) determinata $x = -2$;

c) $x = -4 \rightarrow 2 + 3x = \frac{3}{4}x - 7$;

3)

a) Area della base = 36 cm² ;

b) Area laterale = 78 cm² ;

c) Area totale = 150 cm² ;

d) Volume = 108 cm³ ;

f) massa = 2086,56 grammi ;

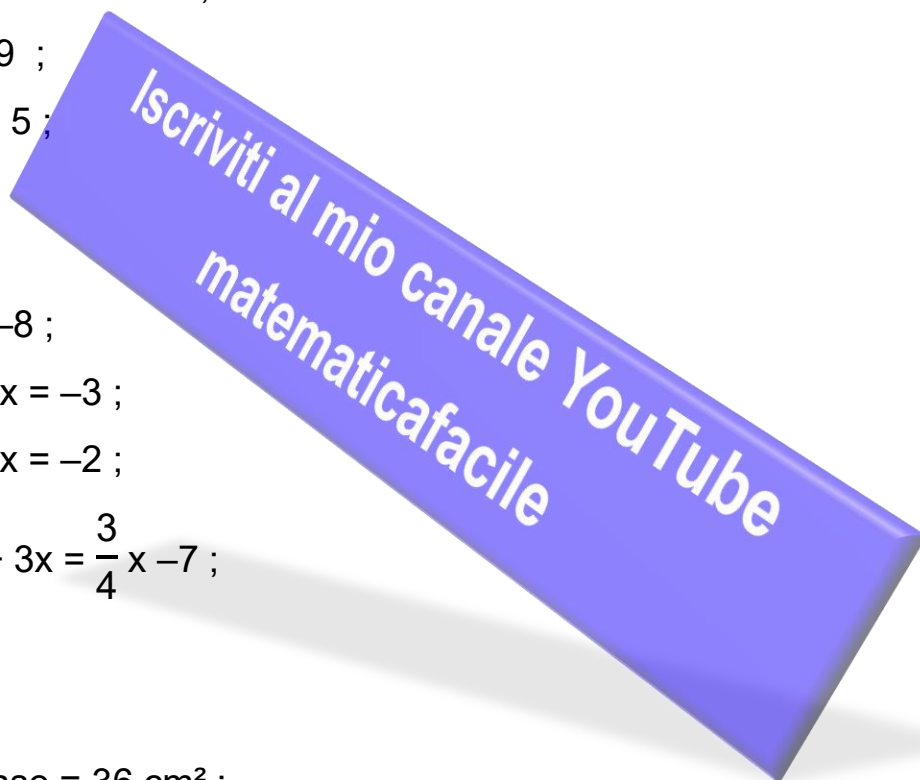
g) Valore = 118 933, 92 € ;

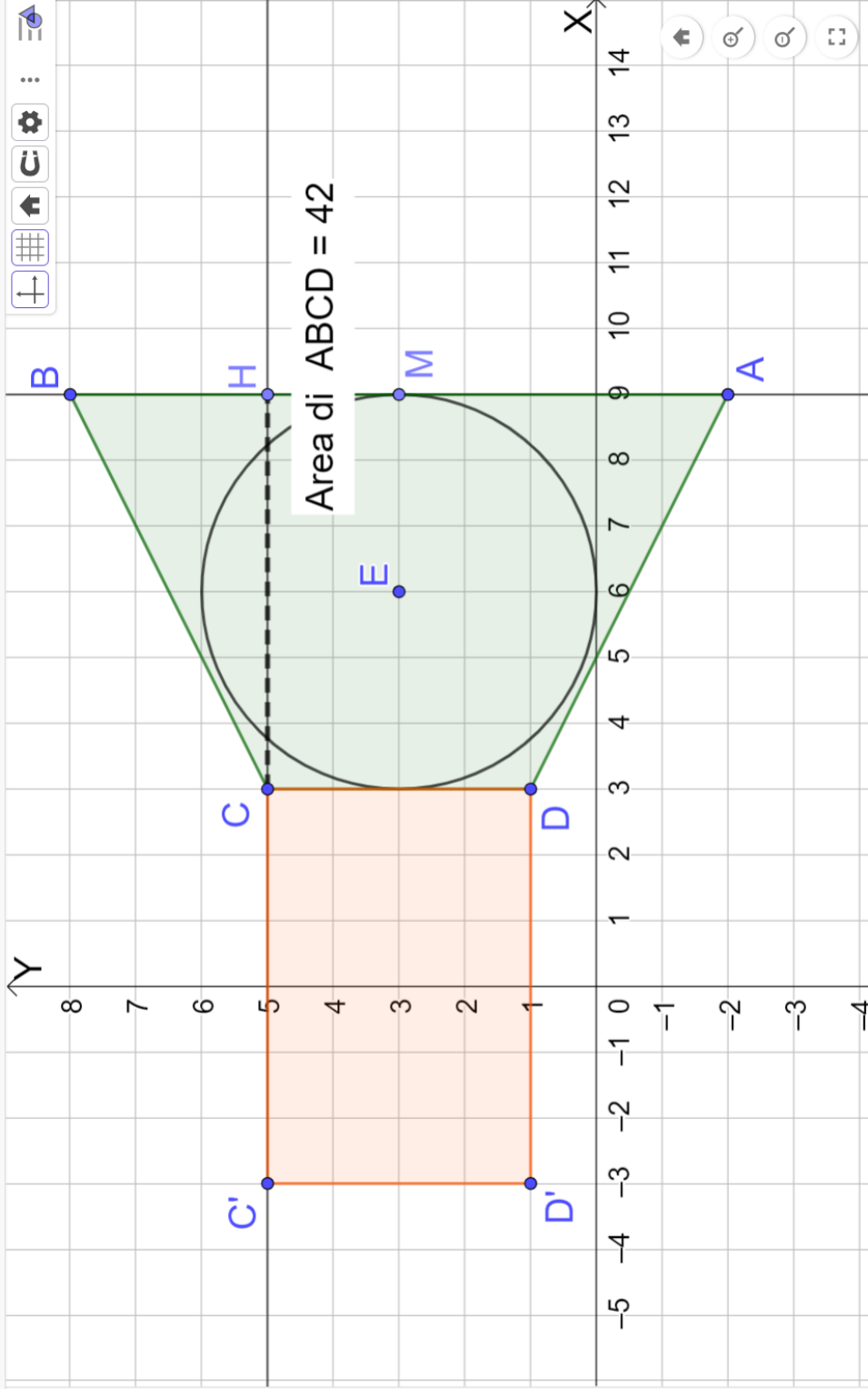
4)

a) 25 alunni ;

d) mediana = 20; moda = 14; media = 20 ;

e) 28%





$$= (x - 6)^2 + (y - 3)$$

$$C' = (-3, 5)$$

$$D' = (-3, 1)$$

$$q_2 = \text{Poligono}(C, D, E, H) = 24$$

$$c' = \text{Segmento}(C', D') = 4$$

$$c_1 = \text{Segmento}(C, D) = 6$$

$$d' = \text{Segmento}(D', C') = 6$$

$$d_1 = \text{Segmento}(D, C) = 4$$